

RB-26

(AWS A5.1 E6013)



**The Traditional and Advanced Covered Electrode,
" RB-26," for Mild Steel Sheet Metals**

When RB-26 Was First Launched in the Market

RB-26 is a high titania type covered electrode for welding mild steel. It was developed in 1951. The R in RB stands for Rutile, which is the major ingredient in the coating flux, while B symbolizes a slag-shield covered electrode. 26 represents the 26th year of the Showa era of Japan, corresponding to 1951 when it was developed.

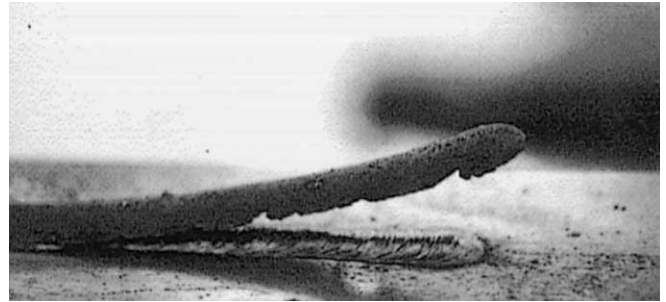


Fig. 1 - Convenient self-peeling slag removal with RB-26 assures a glossy bead appearance without post-weld brushing

Is RB-26 Old-Fashioned?

You may believe that RB-26 is old-fashioned. RB-26, however, is commonly used worldwide for welding light sheet metals and light-gauge formed steel in light-duty steel structures, and for surfacing thick-section welds to improve rough surfaces (Surface Dressing). The consumption of RB-26 differs country by country. In Southeast Asia and the Middle East, RB-26 is one of the most commonly used, contemporary electrodes.

How RB-26 is of International

Kobe Steel has established a worldwide production and sales network in order to assure better delivery and technical services matching local demands for RB-26. RB-26 is now mainly produced by Thai-Kobe Welding Co., Ltd. in Thailand, and is sold not only in the Thai domestic market, but also exported to Saudi Arabia, Vietnam, and Singapore. RB-26, among all the various brands classified as AWS E6013, has persistently earned high reputation in these international markets.

Is RB-26 the Same as Other E6013 Electrodes on Quality?

RB-26 persistently earns a good reputation among users due to the following outstanding features in out-of-position welding including the vertical-down position:

- (1) Smoother arc transfer
- (2) Less spatter
- (3) Convenient self-peeling slag removal as shown in Fig.1
- (4) Smoother bead surfaces with a fine ripple
- (5) Excellent fusion with base metals provides a longer bead per one electrode – this is advantageous in welding sheet metals.

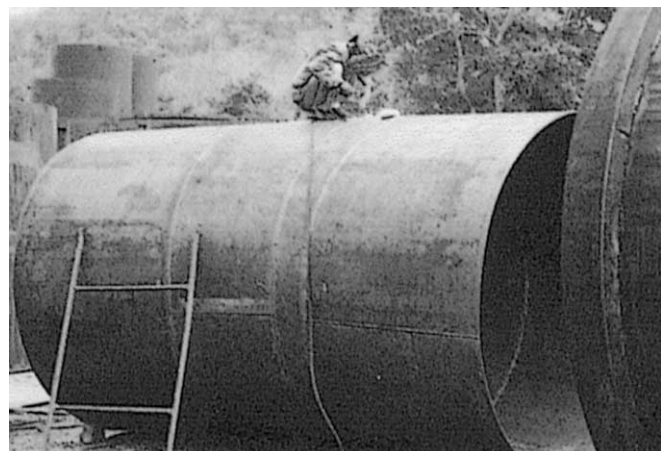


Fig. 2 - Water tanks with a thin section often use RB-26 in Thailand.

Committed to Quality and Customer Satisfaction

The high quality of RB-26 produced in both Japan and overseas is approved and certified for shipping registers of Nippon Kaiji Kyokai, American Bureau of Shipping and Lloyd's Register of Shipping. These approvals and certificates will be reliable to users on the quality of RB-26.

Further, the emphasis on quality pervades the factories in Japan and overseas – with nearly all of our employees involved in quality control circles. To ensure RB-26 is defect-free, we inspect it piece by piece and lot by lot of production by using Kobe Steel's proprietary inspection processes and procedures.



Fig. 3 - To ensure the quality of RB-26 an employee inspects the electrodes piece by piece in accordance with Kobe Steel's standard.
(Above: Thai-Kobe Welding)



Fig. 4 - In order to make sure the quality of RB-26 an employee inspects the electrodes lot by lot by using Kobe Steel's proprietary inspection procedures.
(Above: Thai-Kobe Welding)

To further ensure customer satisfaction, our marketing staffs work closely with customers, providing technical services that include training in welding techniques. Unsurpassed quality of RB-26 and customer satisfaction remain our highest priorities.

Something New in the Traditional

Since its inception, RB-26 has seen its features refined and its markets expanded. Kobe Steel pursues keen quality control in order to maintain the outstanding features of RB-26 produced in Japan and overseas. RB-26 is a traditional covered electrode, but, at the same time, highly advanced in that the quality of RB-26 has been maintained through advanced research and production engineering. Kobe Steel hopes RB-26 will be an indispensable electrode for your workshops.